

General Imaging

# Compact Color and Doppler without Compromise

**MyLab20** Family



**e**saote







## Flexibility without Compromise

### > Modular Application & Feature Possibilities

The MyLab20, just as all systems in the MyLab World, is based on an innovative modular architecture. This allows the user to configure the system to his or her unique needs through various optional application-based licenses. The MyLab20's modularity includes special features, such as complete selection of obstetric measurement packages. Further optional modules, such as the TEI™ (Tissue Enhancement Imaging) feature are available through the MyLab20's flexible license-based architecture. TEI increases image resolution by minimizing artifacts and is available on all probes.

### > OB/GYN

The MyLab20's functionality can be enhanced with specific features in addition to the OB/GYN application module. The Mother-Child Database feature is an internal database that allows clinicians to save fetal measurements made at each visit and to view and analyze these throughout the pregnancy, all in one easy report. Combines with Esaote's state of the art field-of-view endocavity probe, the MyLab20's automatic pulsatility and resistive index (PI, RI) calculation and Doppler tracing functions make it an ideal system for today's busy OB/GYN ultrasound department or practice.



Fetal head & left hand



Fetal brain



Umbilical Cord

- > TEI™ - Tissue Enhancement Imaging
- > License-based Application Modules



## > Small Parts, Musculoskeletal, Urology

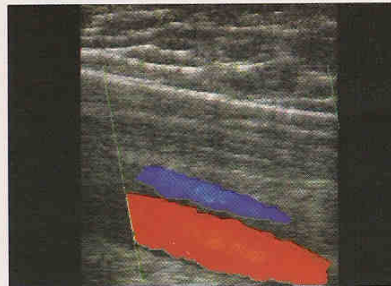
High sensitivity color Doppler, power Doppler and directional power Doppler assist the MyLab20 user in making reliable diagnoses in small parts applications. The premium black and white imaging, in combination with the TEI option, produces clear and detailed images, even in difficult-to-image patients; essential in musculoskeletal, urology and small parts examinations. The unique endocavity probe is ideal for urology, and just as the various linear probes, is multifrequency, lightweight, easy-to-handle and can be used with both reusable and disposable biopsy kits.

## > Vascular

The multifrequency, ergonomic and lightweight linear and microconvex probes and high-quality black and white, color and Doppler imaging modes make the MyLab20 a perfect system for vascular examinations in both adults and children. The system delivers optimal images for various anatomical examinations and PW Doppler to analyze blood flow accurately. Additionally, the automatic Doppler tracing feature is an easy-to-use tool for Doppler spectrum analysis and increases daily workflow efficiency.



Early pregnancy using TV probe



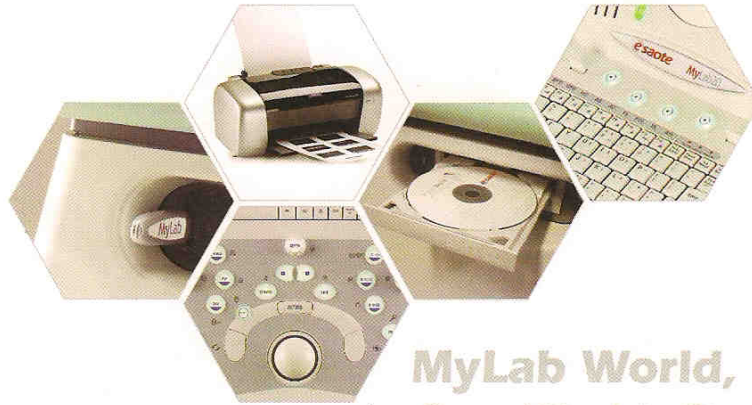
Phlebology in color mode



Kidney in power Doppler mode



**esaote**



**MyLab World,  
One World, One Language**



**MyLab20**

833 0803 000 (Rev.A)



0344

ISO 13485: 2003    ISO 9001: 2000

Esaote S.p.A.

International Activities: Via di Caciolle, 15 50127 Firenze, Italy, Tel. +39 055 4229 1, Fax +39 055 4229 208, international.sales@esaote.com

[www.esaote.com](http://www.esaote.com)



Distributed by:  
**CHOKSI IMAGING LIMITED**

**MUMBAI:** Classique Centre, C-Wing 4th Floor, Plot No. 26, Mahal Indl. Estate,  
Off Mahakali Caves Road, Andheri (E), Mumba - 400 093. INDIA  
Tel.: (91-22) 3254 9330, 4006 0500 • Fax : (91-22) 4006 0506

**CHENNAI :** 14, Bawa Road, Abhiramapuram, Chennai - 600 018. INDIA  
Tel.: (91-44) 3296 5885, 2498 4898 • Fax : (91-44) 2498 8706

**NEW DELHI :** 21, Darya Ganj, Ansari Road, New Delhi - 110 002. INDIA  
Tel.: (91-11) 3244 5548, 2327 4265 • Fax : (91-22) 2327 5146

**KOLKATA :** 186, Sarat Bose Road, Kolkata - 700 029. INDIA  
Tel.: (91-33) 3258 9936, 2465 7909 • Fax : (91-33) 2465 7909

Email : [teamkontron@gmail.com](mailto:teamkontron@gmail.com) • Website : [www.choksiworld.com](http://www.choksiworld.com)