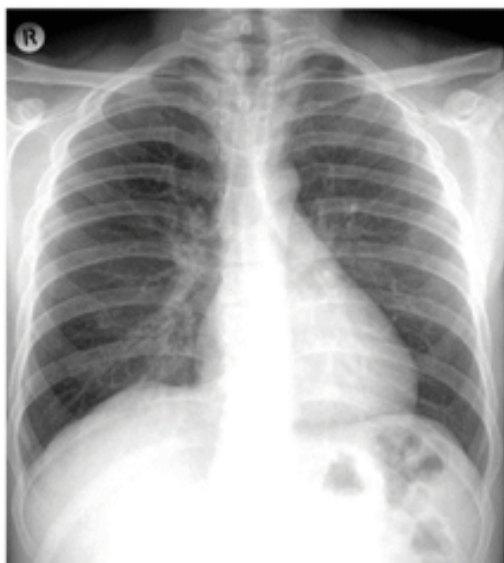


# LASER

**LASER** LG Film/General Purpose/Green

YOU CAN AFFORD QUALITY  
FILM FOR  
GENERAL RADIOGRAPHY



LASER LG Medical x-ray film/general purpose/green brings film technology to your x-ray department without stretching your budget.

This orthochromatic, medium-contrast film is suitable for all types of radiographic examinations. Features include :

- T-Grain emulsion that delivers high visibility of details without sacrificing speed, improved image sharpness, good detail resolution, high stability to varying processing conditions, high consistency and a good static protection.
- For giving exposure and robust processing tolerance to reduce the need for costly re-examinations.
- Manual or automatic processing in standard and rapid ( 60 - seconds ) cycles.
- Film has been tailored for manual processing. It provides good diagnostic quality radiographic image in non ideal exposing and processing conditions.

## LASER LG Medical X-RAY Film/General Purpose / Green

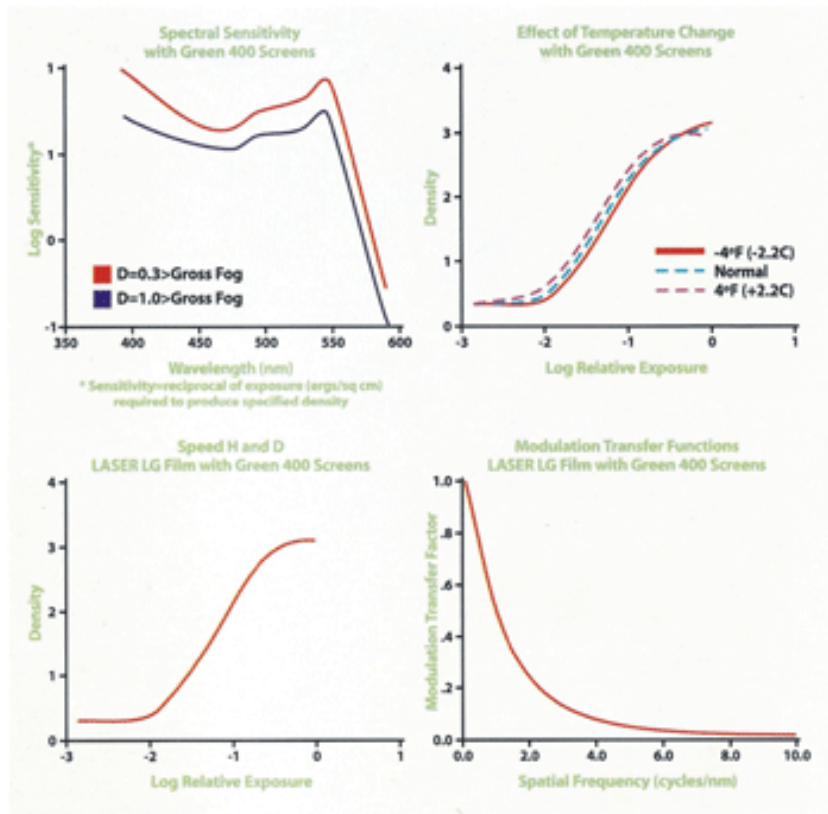
### Quality Image-reduced exposure

LASER LG Medical x-ray film/general purpose/green is part of a family of affordable LASER offering for radiography including films, screens cassettes, film processing chemicals, and automatic film processors.

This orthochromatic film uses T-Grain technology to deliver improved image resolution, reduced image noise, high sensitivity, high contrast (average gradient  $\bar{G}=2.90$ ), high  $D_{max}$ , low base fog and higher system speed than most conventional "blue" intensifying screens and films. In addition, the reduced chemical rates recommended for this film can provide chemical cost savings.

LASER Medical x-ray film/general purpose / green is designed for use with LASER Green 400 intensifying screens or equivalents. These screens deliver speed and resolution with the imaging power of green-light-emitting rare-earth phosphors.

The resulting screen-film system yields quality images and reduces operating expenses.



### FILM PROCESSING

Manual processing or automatic processing using standard and rapid (60 second) cycles. LASER medical x-ray chemicals are recommended for optimum results.

### Specifications

#### FILM CARE AND HANDLING

Storage : 50 to 70° F ( 10 to 21° C )  
30 to 50% relative humidity

Manufactured By:

## ASSET HEALTHCARE DIV. OF CHOKSI IMAGING LIMITED

Plot No. 10, Silvassa Indl. Co. op. Soc. Ltd., Off 66 KVA Road, Aml, Silvassa - 396 230. INDIA.

For further information please contact

## CHOKSI IMAGING LIMITED

D-10, Prasad Industrial Estate, Survey No. 2, & 66, Sativali, Vasai - Kaman Road, Vasai (East), Dist. Thane - 401 208. INDIA.

#### MUMBAI

Tel. : (022) 4092 9999 Fax : (91-22) 4092 9998  
E-mail : [choksi@bom3.vsnl.net.in](mailto:choksi@bom3.vsnl.net.in)

#### CHENNAI

Tel. : (044) 2498 4898 Fax : (91-44) 2498 8706  
E-mail : [choksi@md3.vsnl.net.in](mailto:choksi@md3.vsnl.net.in)

#### KOLKATA

Tel. : (033) 3258 9936 Fax : (91-33) 2465 7909  
E-mail : [choksi@cal2.vsnl.net.in](mailto:choksi@cal2.vsnl.net.in)

#### DELHI

Tel. : (011) 2327 4265 Fax : (91-11) 2327 5146  
E-mail : [choksi@d3.vsnl.net.in](mailto:choksi@d3.vsnl.net.in)

Website :- [www.choksiworld.com](http://www.choksiworld.com)