

Technical data

High voltage	60-85 kV, in 5 kV steps						
Anode current	10 mA						
Focal spot	0.5 mm (IEC 336)						
Exposure time	<table border="1"> <tbody> <tr> <td>Panoramic</td> <td>17 sec adult, 14 sec child</td> </tr> <tr> <td>TMJ open/closed mouth</td> <td>10.4 sec adult, 9.4 sec child</td> </tr> <tr> <td>Ceph</td> <td>0.2-3sec</td> </tr> </tbody> </table>	Panoramic	17 sec adult, 14 sec child	TMJ open/closed mouth	10.4 sec adult, 9.4 sec child	Ceph	0.2-3sec
Panoramic	17 sec adult, 14 sec child						
TMJ open/closed mouth	10.4 sec adult, 9.4 sec child						
Ceph	0.2-3sec						
Power supply voltage	120/220/230/240 Vac (± 10%) single phase, 50/60 Hz						
Absorbed current	5 A @ 230 V / 10 A @ 108 V						
Power rating	1.15 kVA						
Weight	<table border="1"> <tbody> <tr> <td>without ceph arm</td> <td>236 kg</td> </tr> <tr> <td>with ceph arm</td> <td>260 kg</td> </tr> </tbody> </table>	without ceph arm	236 kg	with ceph arm	260 kg		
without ceph arm	236 kg						
with ceph arm	260 kg						
Rotograph ST							
Available examination	Panoramic adult, panoramic child, sinus						
Cassette size	panoramic, sinus 15x30 cm (6"x12"), curved						
Rotograph Plus							
Available examination	Panoramic adult, panoramic child, sinus, TMJ open/closed mouth, cephalometry (optional)						
Cassette size	panoramic, sinus, TMJ 15x30 cm (6"x12"), curved ceph 18x24 and 24x30 cm or 8"x10" and 10"x12" (to be specified at order)						



VILLA
SISTEMI
MEDICALI

Dental
Line


ROTOGRAPH
Plus

ROTOGRAPH *plus*

Dental Panoramic System

The best possible choice



Functions are selected on a compact hand-held remote control, showing all pertinent information in clear text messages. Setting of the exposure parameters can be done in manual mode or with preset anatomic programs according to patient type (adult or child) and size.

The Rotograph is a panoramic unit designed to satisfy the X-ray imaging needs and requirements of specialists operating in the dental field.

Image Quality

Clear and sharp images are what we provide to ensure accurate diagnosis for your patients.

User friendly

A few easy steps are enough to obtain high quality radiographic images, without unnecessary complications.

Value for money

Rotograph employs consolidated technologies and European-Standard production processes that guarantee an excellent price/performance ratio.

Reliability

Thousands of satisfied users can confirm the constant high level performance and reliability of the Rotograph, as a long term safeguard of your investment.

Rotograph Plus provides for features that guarantee the maximum diagnostic content in every condition of use.

The X-ray tube with small size focal spot ensures high image quality, in particular for the definition of fine details. The modulation of the cassette movement speed eliminates artifacts due to the cervical spine shadow. The automatic mains voltage compensation ensures a correct and constant darkening of the film.

Patient positioning

Correct patient positioning is the key factor for good panoramic radiography. The perfect centering of the patient is obtained with a three point support system: i.e. chin support, bite block and temple clamps. The alignment is ensured by the crosshair positioning reference that allows to precisely indicate the sagittal and Frankfurt planes.

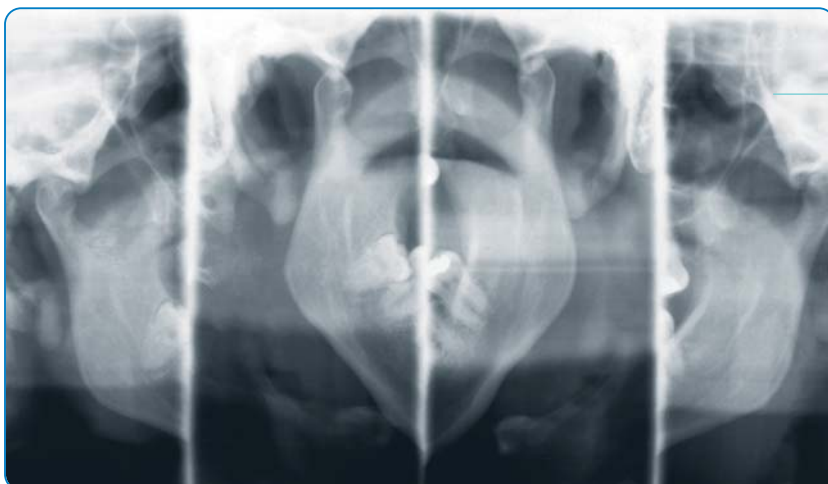
Applications

With Rotograph Plus you can perform the most frequent exams in the dental practice, such as panoramic, both with adult and child reduced dose programs, temporo-mandibular joint with open and closed mouth and the maxillary sinus.



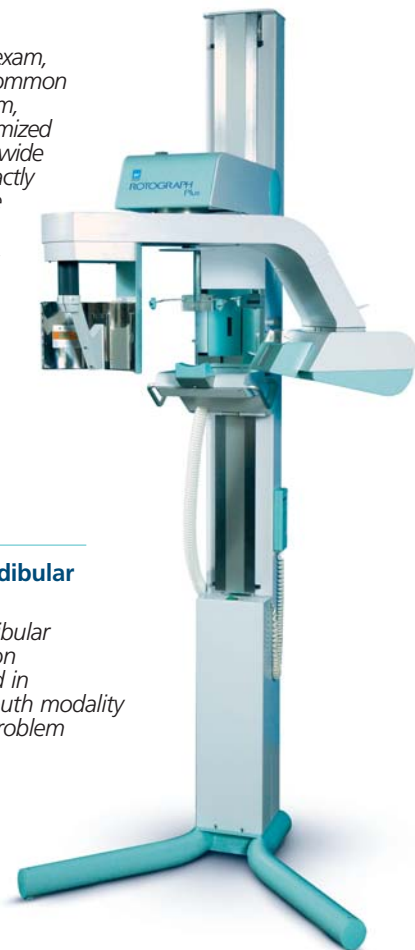
Panoramic

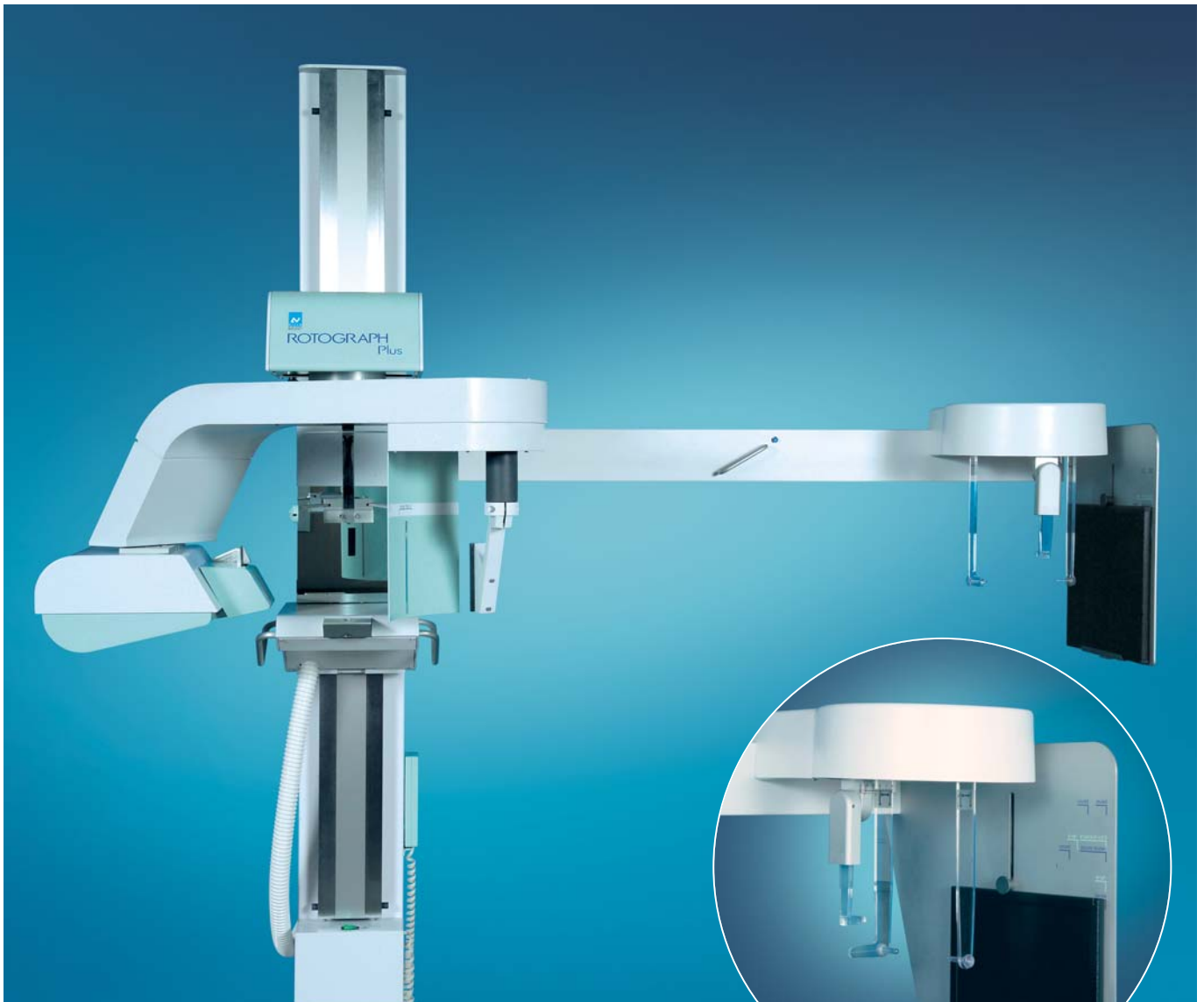
The panoramic exam, performed on common 15x30cm size film, employs an optimized trajectory and a wide focal layer to exactly follow the shape of the jaws on every patient.



Temporo-Mandibular Joint

Temporo-Mandibular Joint examination can be executed in open/closed mouth modality for functional problem study.





The Rotograph Plus version can be equipped with a cephalometric arm that can be retrofitted in field at any time, to expand applications to the orthodontic field.

Rotograph Plus is also available as "ST" version that provides the best possible price/performance ratio when only the panoramic exam is required. This version is not equipped for the TMJ and ceph exams and cannot be modified.

Cephalometry

Ceph examinations can be performed using films of different sizes and a dedicated soft tissue filter for the enhancement of the patient's contours in the lateral projection.