

TRIMAX

TX55 LASER IMAGER



High Quality Laser Imaging for Multiple Modalities

We designed the TRIMAX TX55 Laser Imager to give you more for your investment. It offers compatibility with popular modalities, including MRI, CT, Ultrasound and Mammography. It also delivers exceptional image quality so you can perform and diagnose with confidence.



Carestream



A HERITAGE OF TRUST AND INNOVATION

The TRIMAX TX55 Laser Imager from Carestream Health reflects more than 100 years of imaging leadership. We built one of the world's best-selling and most trusted brand of diagnostic imagers and film. Now, Carestream brings you innovative imaging solutions that continue that heritage – delivering the power, flexibility and affordability you need.

The highly flexible and efficient TRIMAX TX55 Laser Imager offers true dry laser imaging and compatibility with a full range of imaging applications, including Computed Radiography (CR), Digital Radiography (DR), Magnetic Resonance Imaging (MRI), Computed Tomography (CT), Ultrasound, CR-Mammography and Full Field Digital Mammography.

INDUSTRY LEADING IMAGE QUALITY

Every hospital and clinic deserves the diagnostic and cost-saving benefits of Carestream laser imaging technology. Our laser imaging technology uses laser light, rather than heat to expose each image pixel, which ensures crisp and consistent film quality and minimal service requirements. The system simplifies quality control for end-users with Automatic Image Quality Control (AIQC) technology. This built-in feature automatically calibrates film and imager settings to meet your pre-set imaging preferences.

MAMMOGRAPHY CAPABILITIES

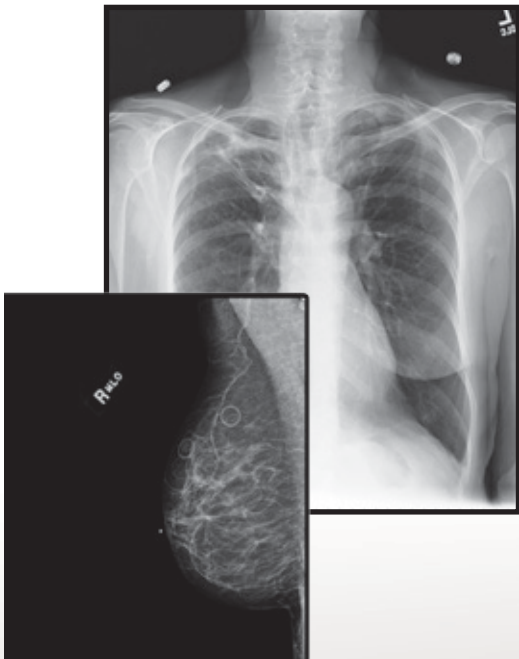
The TRIMAX TX55 Laser Imager offers exceptional quality for both Full Field Digital Mammography and CR-Mammography images. The system makes high-quality mammography easy with user-selectable test patterns, enhanced chest wall edge detection algorithms and key control charting parameters and values.

EASY OPERATION, MINIMAL TRAINING

An intuitive user panel simplifies unit operation and can minimize user training requirements for your staff. Another great time-saver is our daylight load film cartridge technology. Operators can quickly and easily insert film cartridges in complete daylight. Daylight loading requires no bags, no scissors and no special darkroom facilities. Users can simply “load and go.” A built-in web portal provides connectivity with Carestream service experts and diagnostic tools. It also allows users to view, in multiple languages, imager status and performance data from a workstation on your network.

Key Features

- High-quality dry laser imaging technology
- Daylight load film cartridges in four film sizes
- Built-in mammography capabilities
- Internal DICOM interface
- Space-saving footprint
- Responsive service and support



FLEXIBLE AND PRODUCTIVE

The TRIMAX TX55 Laser Imager lets users choose from four film sizes – 14 x 17 in. (35 x 43 cm), 11 x 14 in. (28 x 35 cm), 10 x 12 in. (25 x 30 cm) and 8 x 10 in. (20 x 25 cm) with any two sizes on-line. Changing film sizes is easy with the daylight load film cartridges. The system prints up to 65 large films and 100 small films per hour with 508 pixel-per-inch precision.

RESPONSIVE SERVICE AND SUPPORT

The TRIMAX TX55 Laser Imager has built-in features – such as an integrated DICOM interface, and connectivity for CARESTREAM Smart Link remote technology solutions which add to the overall power and productivity of the system. Smart Link is available to Carestream customers all over the world and creates a powerful bridge between your laser imager and Carestream's Customer Success Network. With the Carestream Customer Success Network, you have access to an extensive global team of experts that offers years of innovation, creativity, and proven ability. It's your personal community of service and support for you and your patients – and a resource your staff can depend upon 24 hours a day and 7 days a week.

CONVENIENT TABLETOP SYSTEM

Adding the TRIMAX TX55 Laser Imager to your operation requires no special facility modifications. A compact footprint – 25 in. x 26 in. (63 cm x 65 cm) – allows you to locate the imager wherever you need high-quality film output.

A COMPLETE HEALTH IMAGING PORTFOLIO

Carestream offers the industry's broadest portfolio of imaging solutions, including solutions for HIS/RIS, PACS, Digital Radiography (DR), Computed Radiography (CR), hardcopy digital output and traditional film and screen products. When you choose the CARESTREAM and TRIMAX brands, you get more than quality imagers – you get a partner that can support your needs as technology advances and your operations grow.

ABOUT CARESTREAM

Carestream is a dynamic global company with more than 100 years of medical imaging leadership. We offer an unmatched portfolio that's designed to meet a full range of needs. No matter where you are in your medical imaging roadmap, we can provide you with affordable, high-quality solutions for today – and a clear path for where you want to go. We are passionately committed to doing whatever it takes to help our customers be successful.



TRIMAX TX55 LASER IMAGER

PRODUCT SPECIFICATIONS

Technology

- Photothermographic (dry laser)

Dry laser imaging quality

- True laser technology
- 508 laser pixels per inch
- 50 micron laser spot spacing
- 14-bit pixel depth architecture

Throughput

- Time to first print: 100 seconds
- Up to 65 films per hour:
14 x 17 in. (35 x 43 cm)
- Up to 100 films per hour:
8 x 10 in. (20 x 25 cm)

Dimensions

- Height: 29.8 in. (75.6cm)
- Width: 24.6 in. (62.6cm)
- Depth: 25.5 in. (64.9cm)
- Weight: 175 lbs. (79kg)

Operating Environment

- Temperature: 59 to 91°F (15 to 33°C)
- Humidity: 20 to 80% RH, non-condensing
- Magnetic field: < 50 Gauss
- Altitude: -100 to 9,800 ft (-30 to 3,000 m)

TRIMAX Laser Imaging Film

- Blue 7-mil polyester base
- Daylight load film cartridges (125 sheets)
- Lifetime (100+ years) film archivability for demanding applications (oncology, mammography, pediatrics, etc.)
- Printed film images with standard Dmax of 3.0
- Mammography films
3.6 Dmax with TXM
4.0 Dmax with TXM+

Choice of four film sizes

- The system supports the following film sizes:
14 x 17 in. (35 x 43 cm)
11 x 14 in. (28 x 35 cm)
10 x 12 in. (25 x 30 cm)
8 x 10 in. (20 x 25 cm)

Automatic image quality control (AIQC)

- No manual start-up or film calibration procedures
- Ensures consistency from film to film

Network connectivity

- Integrated DICOM interface supports printing from DICOM modalities
- Built in with no separate DICOM server

Power

- 90–130 VAC; 50/60 Hz; maximum 9 amps
- 180–264 VAC; 50/60 Hz; maximum 4.5 amps

Network connection

- 10/100/1000 Base T Ethernet connection to imager
- Network connection via CAT5 UTP cable terminating in an RJ-45 plug

User languages supported:

- Chinese (simplified)
- English
- French
- German
- Greek
- Italian
- Japanese
- Polish
- Portuguese
- Slovak
- Spanish
- Turkish
- Russian

Carestream Innovation

Carestream is a worldwide provider of medical printing systems, computed radiography and digital radiography systems; x-ray film and digital x-ray systems for non-destructive testing; advanced materials for the precision films and electronics markets; and healthcare IT solutions and dental products.



carestream.com

